

When Luxury Furniture Meets a Virtual Icon: The MIKU ART CHAIR is Real

Yes, you read that right. You can now sit with Hatsune Miku.

Starting Friday, July 18, 2025, the HATSUNE MIKU ART CHAIR—a stunning, limited-edition lounge chair born from a collaboration between global virtual icon Hatsune Miku and Hokkaido's legendary furniture brand CondeHouse—will go on sale. This isn't just a chair. It's a full-on experience.

Based on the award-winning Flan Living Easy Chair, it features a tall wooden backrest designed to create a sense of private space—and printed across that backrest is a vivid, high-definition image of Miku herself, wrapping around the sitter like a gentle embrace. Each chair showcases a unique artwork created by one of three acclaimed Japanese artists: Kosuke Kawamura, SHETA, and Shoko Hirose. Their radically different takes on Miku are printed on luxurious Ultrasuede® by Toray—yes, the good stuff.

But wait, there's more. Beneath the seat? A nameplate personally signed by the artist, made from recycled Hokkaido scallop shells. (Yes, seriously.) Crafted from strong and beautiful Hokkaido ash, this chair is equal parts digital pop culture and timeless woodcraft. Only 100 units will be available—The first public showcase will take place at Magical Mirai 2025 in Osaka and Tokyo this August. It's real. You can buy it. You can sit on it. And yes—Miku's watching.



Kosuke Kawamura Ver.



SHETA Ver.



Shoko Hirose Ver.

Product details

Model name : MIKU ART CHAIR

Size : w: 1000mm d: 775mm h: 1210mm sh: 410 mm

Release date : Friday, July 18, 2025

Lead Time: Approximately 6 weeks from factory shipment

Price: ¥592,900 (incl. tax)/ ¥539,000 (without tax)

- * Only one wood type, finish, and upholstery option available per version
- * Comes with an artist-signed nameplate
- * Purchase bonus: 45 cm square cushion with matching artwork fabric

Where to Experience the Chair – And How to Make It Yours

Available through the dedicated website starting

July 18, 2025

<https://mikuartchair.myshopify.com/>

In-store Display Sales Start Date: From Saturday, August 9, 2025

- CondeHouse Asahikawa Shop (Kosuke Kawamura Ver. / SHETA Ver. / Shoko Hirose Ver.)

- CondeHouse Tokyo / Osaka / Yokohama Shops (Kosuke Kawamura Ver. only)



What is the HATSUNE MIKU ART CHAIR?! — Sit Down. The Future Awaits.

Hatsune Miku has always sung from a world just beyond ours—filled with sound, color, and imagination. Now, that world becomes something you can actually sit in. The MIKU ART CHAIR is “seated art”—a fusion of bold visuals and warm Japanese craftsmanship. Designed by CondeHouse and featuring artwork from the ART OF MIKU exhibition, this chair is more than furniture. It’s a sculptural experience. A piece of the future you can touch. It’s not just about sitting. It’s about feeling closer to Miku than ever before.

- MIKU ART CHAIR KOSUKE

KAWMURA Ver.

Hokkaido Ash (DGY finish), Ultrasuede® upholstery and cushion



- MIKU ART CHAIR SHETA Ver.

Hokkaido Ash (NF finish),
Ultrasuede® upholstery and
cushion



- MIKU ART CHAIR SHOKO HIROSE
Ver.

Hokkaido Ash (NF finish),
Ultrasuede® upholstery and cushion



Try It, Snap It, Order It! Magical Mirai 2025 Exclusive Showcase OSAKA-TOKYO

The HATSUNE MIKU ART CHAIR – Kosuke Kawamura Ver. and limited-edition artworks will be on display (and available for order!) at the MIKU ART CHAIR booth during Magical Mirai 2025 in Osaka and Tokyo this August.

Yes—you can actually sit in the chair.

Yes—you can take photos.

Yes—there will be exclusive giveaways at the booth.

(Details coming soon on the official site!)



Art by Tiv © CFM

『Exhibition "Magical Mirai 2025" and Booth information

OSAKA : August 9 (Sat) – August 11 (Mon, Holiday), 2025

Location: INTEX Osaka, Hall 4 / Booth No. 28 'MIKU ART CHAIR'

TOKYO : August 29 (Fri) – August 31 (Sun), 2025

Location: Makuhari Messe, Exhibition Halls 10 & 11 / Booth No. 9 'MIKU ART CHAIR'

『Magical Mirai 2025』

Official Website

<https://magicalmirai.com/2025/>

※Ticket have to be buy to acces
to the Exhibition

Built on Award-Winning Comfort: The FLAN Living Easy Chair

At the heart of the MIKU ART CHAIR is the FLAN Living Easy Chair, a prize-winning design by Hokkaido's own Shuhei Shimosato. Born from the IFDA 2021 design competition and crafted from beautiful Hokkaido ash, it's not just good-looking—it's officially award-winning (hello, 2023 Wood Design Award). With its tall backrest that offers privacy and presence, this chair isn't just for homes. It's also right at home in offices, lounges, and any space that deserves a touch of art... and Miku.



【Seriously Sharp Printing. Seriously Soft Cushion.】

Each chair is wrapped in Ultrasuede®—a high-tech Japanese fabric from Toray Industries that brings every artistic detail to life with stunning clarity. Bonus? You'll also get a matching 45cm cushion, filled with cozy microfiber and wrapped in the same artwork. Yes, it's as soft as it sounds.



【Signed by the Artist. Made from Scallop Shells. Seriously.】

Underneath the seat, you'll find a nameplate personally signed by the artist. And get this—it's made from eco-friendly bioplastic made using Hokkaido scallop shells. (It's true. The future is weird and wonderful.)

Photos will be available soon on the official MIKU ART CHAIR website.

From Asahikawa to the World – Where Woodcraft Meets Pop Culture

CondeHouse has been crafting fine wooden furniture in Asahikawa, Hokkaido since 1968. Their focus? Timeless design, expert craftsmanship, and materials that feel like home. Now, in a bold leap beyond traditional furniture, they've teamed up with fellow Hokkaido innovator Crypton Future Media—the creators of Hatsune Miku—to bring Japanese woodcraft and pop culture together like never before.

The result? A chair unlike anything the world has seen. And yes, it's going global—rolling out across 28 countries and regions, with the aim of sharing not just a product, but a whole new cultural experience.

Artist Lineup & Artwork Highlights

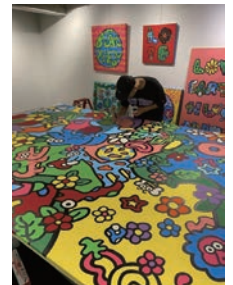
Kosuke Kawamura — "Untitled 2"

A layered collage approach reinvents Miku as a new icon of chaotic harmony. Kawamura is known globally for his collaborations in fashion, music, and visual arts.



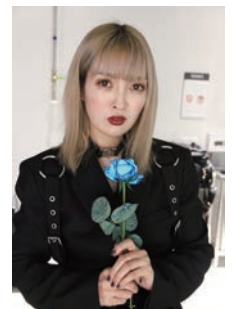
SHETA 「LOVE Piapro Characters B」

A vivid, playful depiction of Miku and friends celebrating joy and togetherness. SHETA brings a pop-art flair rooted in his Shonan upbringing.



SHOKO HIROSE 「Blueprint of the Future Live [Hatsune Miku Live in Shibuya 2039]」

A speculative vision of a Miku concert in 2039, where analog brushstrokes meet digital spirit. Hirose invites us into a liminal future where identity is ever-evolving.



Production Partners

Hatsune Miku / Crypton Future Media Inc. (Sapporo, Hokkaido)

ART OF MIKU / W.creation Inc. (Shibuya, Tokyo)

Printed Art Fabric: Ultrasuede® / Toray Industries Inc. (Chuo-ku, Tokyo)

Signature Plate (bioplastic from scallop shells): Koshi Chemical Industry Co., Ltd. (Higashinari-ku, Osaka)



Art by KEI © Crypton Future Media, INC. www.piapro.net **piapro**

About Hatsune Miku

Hatsune Miku is a virtual singer software developed by Crypton Future Media Inc. that allows users to input lyrics and melody to generate singing. The software sparked a movement when creators began posting music made with Miku online, inspiring a wave of illustrations, videos, and fan content. Today, Miku appears in live concerts and product collaborations as a worldwide icon of virtual culture.

※Kagamine Rin, Kagamine Len, Megurine Luka, MEIKO, and KAITO are also virtual singers developed by Crypton Future Media, Inc.

※「Piapro Characters.」 is also produce and manage by Crypton Future Media Inc.



About ART OF MIKU

An art initiative where leading contemporary artists create artworks themed on Hatsune Miku and other Piapro Characters.



About CondeHouse

Founded in 1968, CondeHouse is a premium furniture manufacturer based in Asahikawa, Hokkaido. The company develops uncompromising designs in collaboration with domestic and international designers, expressing the aesthetic nurtured by Hokkaido's nature and Japanese culture in every product. As of July 2025, CondeHouse operates 7 domestic stores and exports to 28 countries and regions.

Product Inquiries

CondeHouse Inc. / New Business Development Division

Contact Mr.Ijima / Mr. Noel

2-6, Naganuma Kita 2-jo, Asahikawa, Hokkaido 079-8509

Tel : 0166-56-0409 E-mail : newbizdev@condehouse.co.jp

▶「MIKU ART CHAIR」

Special Website

<https://mikuartchair.myshopify.com/>

